

USER INTERFACE KIT INSTRUCTIONS

050/075/100/150/200/299/399 Kit #550002299

Kit installation shall be completed by qualified agency.

⚠ WARNING

Fire, explosion, asphyxiation and electrical shock hazard. Improper installation could result in death or serious injury. Read this instruction and understand all requirements, including requirements of authority having jurisdiction, before beginning installation. Installation not complete until appliance operation verified per Installation, Operation & Maintenance Manual provided with boiler.

Tools required:

- Slotted Screwdriver
- 1/4" Nut Driver

1. Follow instructions TO TURN OFF GAS TO APPLIANCE found on Operating Instructions label on boiler or in Installation, Operation & Maintenance Manual. Verify all electrical power to boiler is turned off.

⚠ WARNING

Electrical shock hazard. Turn OFF electrical power supply at service panel.

2. Remove front jacket panel(s).

⚠ WARNING

Burn hazard. Verify heat exchanger, igniter, and flame sensor have cooled or use appropriate personal protection equipment before removing.

3. Inspect combustion chamber through sight glass. Verify flame is not present. See figures 1, 2 and 3.
4. Grasp user interface at top and bottom using one hand. Squeeze bottom tab while lifting bottom of user interface to release from base. Swing up and off top hinges. See figures 4 and 5.
5. Go to step 10 if not replacing base.
6. Disconnect two (2) wires from base 2-pin connector using slotted screwdriver.
7. Remove two (2) 8-32 screws with slotted screwdriver or 1/4" nut driver. Remove base.
8. Install base using two (2) 8-32 x 1/2" screws.
9. Connect two (2) wires to base's 2-pin connector. Wires are interchangeable.
10. Engage user interface into top hinges, swing interface down to latch onto base.

NOTICE

Two user interface pins engage base's 2-pin connector.

Figure 1 - Sight Glass 050/075/100/150/200

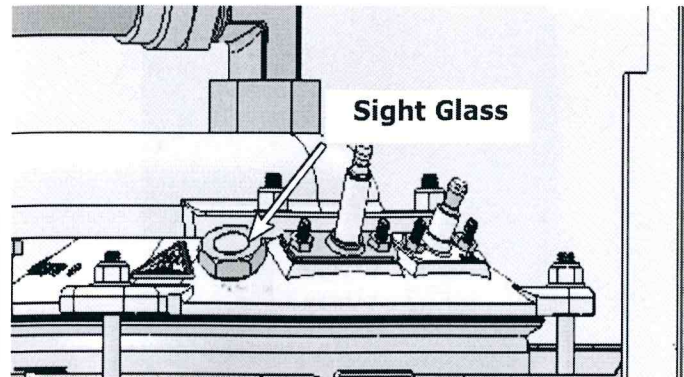


Figure 2 - Sight Glass 299

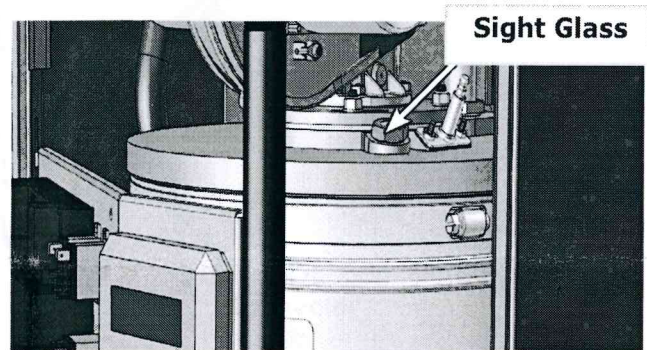


Figure 3 - Sight Glass 399

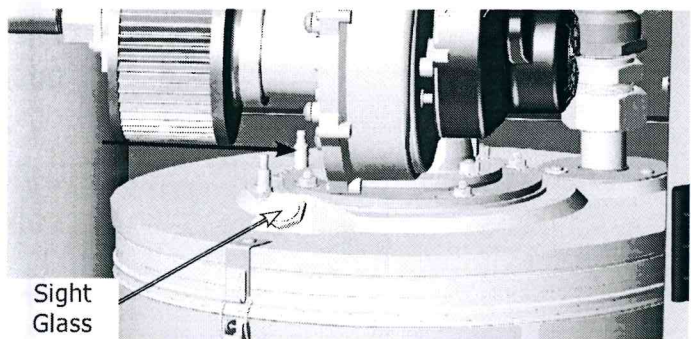
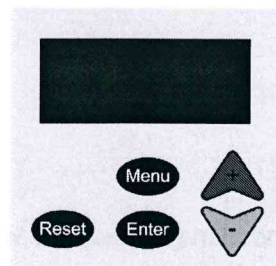


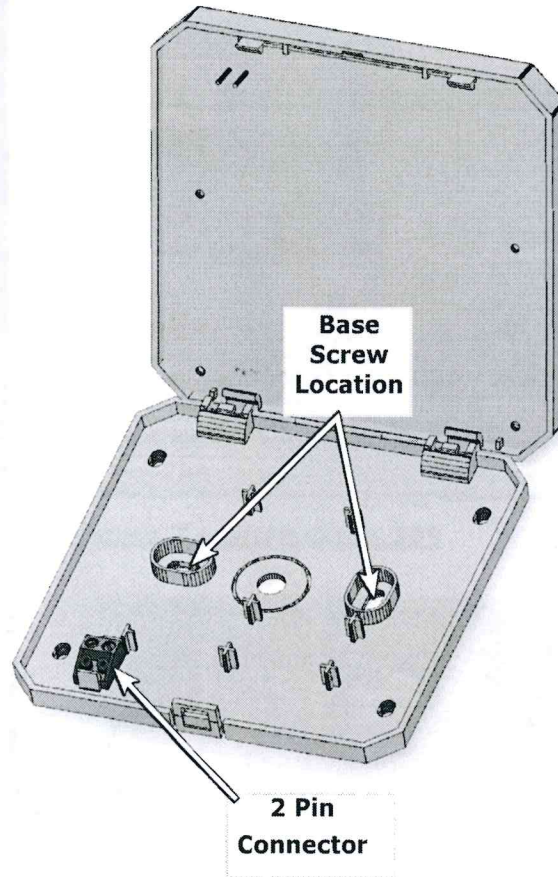
Figure 4 - User Interface Overlay



USER INTERFACE KIT INSTRUCTIONS

11. Turn on electrical power to appliance. Allow User Interface to initialize.
12. User Interface will request model number. Verify model number per rating plate. Change, as necessary:
 - Select Model Number
 - Press Reset, + and - Keys simultaneously.
 - Restore electrical power to boiler.
 - Continue pressing keys for approximately 30 seconds while control module initializes.
 - Use +/- keys to select model shown on rating plate. Press Enter to complete selection.
13. General Finish Instructions
 - Resume operation using OPERATING INSTRUCTIONS found on Operating Instructions label on boiler or in Installation, Operation & Maintenance Manual.
 - Verify proper operation by following START UP PROCEDURE in Installation, Operation & Maintenance Manual.
 - Install front jacket panel(s).

Figure - 5 User Interface 2 Pin Connector



PARTS LIST

050/075/100/150/200/299/399 User Interface Kit # 550002299		
DESCRIPTION	PART #	QTY
User Interface Control	-	1
Screw, 8-32 x 1/2" Type B	-	2
Instructions	240008930	1

Check our website frequently for updates: www.ecrinternational.com