

Model NR111 Series Residential Tankless Water Heater Specification Sheet

- **Standard Input** - gas consumption ranges from 11,000 BTUh to 250,000 BTUh
- **Capacity Range** - flow rates from 0.5 gpm up to 11.1 gpm
- **Compact Design** - ANSI Z21.10.3/CSA 4.3 certified design that can be wall-mounted indoors (-SV and -DV models only) or installed outdoors with an -OD model
- **Durable Steel Casing with Polyester Coating**
- **Heat Exchanger** - manufactured with commercial grade copper, 25% thicker piping than standard models
- **Venting Options** - available in Power Vent (-SV), Outdoor (-OD), or Direct Vent (-DV) model that requires 4" Category III stainless steel pipe
- **Direct Electronic Ignition**
- **Quick-Connect** - two identical units can be linked together by using the optional Quick Connect Cord for twice the hot water capacity
- **Thermal Efficiency** - 84% efficient for use with natural gas or propane
- **Temperature Controls** - includes remote thermostat that can precisely adjust the output temperature from 100°F to 180°F
- **Power Cord Installation Kit** - 6' power cord is included with -SV and -DV models (*assembly required for SV models*)
- **Safety Devices** - Flame Sensor, Overheat Prevention Device, Lightning Protection Device, Freeze Protection
- **Additional Features** - Temperature Lockout, High Elevation Adjustment
- **12-Year* Limited Heat Exchanger Warranty for Residential Use**
- **5-Year Limited Parts Warranty & 1-Year Reasonable Labor**
- **Approvals** - CSA, UPC**, NSF, Low NOx Compliant with Jurisdictions Requiring <40 ng/J or 55ppm Suitable for Installation in a Manufactured (Mobile) Home***



Model	
NR111 - _____	
<input type="checkbox"/>	SV (Standard Vent)
<input type="checkbox"/>	OD (Outdoor Vent)
<input type="checkbox"/>	DV (Direct Vent)
Accessories	
<input type="checkbox"/>	Outdoor Vent Cap for -SV Model (#VC-4-1)
<input type="checkbox"/>	Isolator Valves (#IK-WV-200-1)
<input type="checkbox"/>	Pipe Cover (#PC-3S)
<input type="checkbox"/>	Quick Connect Cord (#QC-1)
<input type="checkbox"/>	Recess Box for OD Model (#RB-900)

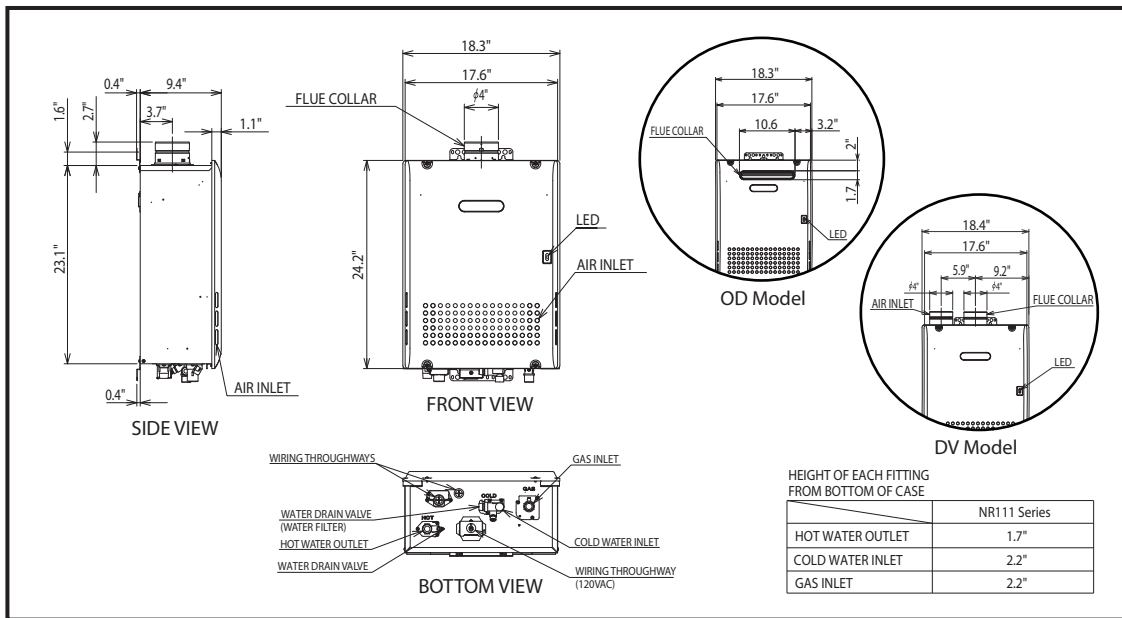


* Heat Exchanger warranty is maintained at 12 years or 6500 operational hours, whichever occurs first, when used in a single family dwelling in conjunction with a controlled recirculation system (an aquastat being the minimum pump control requirement) in accordance with the Installation Manual. Refer to the Noritz Limited Warranty for complete coverage details

** This product complies with California AB 1953 Low Lead Law and Section 1417(d) of the Safe Drinking Water Act

*** Manufactured (Mobile) Home approval is valid for **OD** and **DV** models only

Dimensions

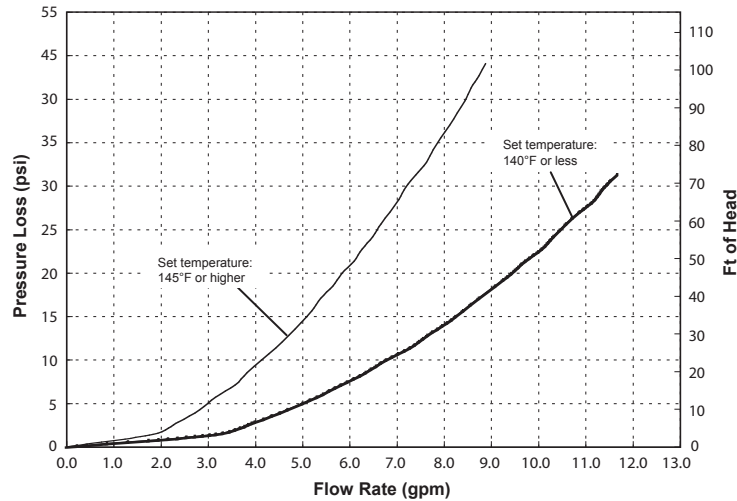


Flow Rates

Temperature Rise (°F)	30	40	45	50	60	70	80	90	100
Flow Rate (GPM)	11.1	10.5	9.3	8.4	7.0	6.0	5.3	4.7	4.2

For peak flow rates in shaded areas, contact Noritz for proper setting

Pressure Loss



Specifications

Model Name	NR111-SV	NR111-OD	NR111-DV
Weight	62 (pounds)		
Water Holding Capacity	0.3 Gallon		
Connection Sizes	Water Inlet	3/4"	
	Hot Water Outlet	3/4"	
	Gas Inlet	3/4"	
Power	Supply	120VAC (60Hz), less than 3 amperes	
	Consumption	NG:62W LP:75W Freeze Prevention 145W	NG:64W LP:77W Freeze Prevention 145W
Freeze Protection	Indoor: -30°F Outdoor: -4°F	Outdoor: -4°F	
Temperature Settings	100-150°F (In 5°F intervals), 160°F, 170°F, *180°F (14 Options)		
Default Temperature Options	120, 130, 140, *180°F (Default is 120°F)		

*181.4°F actual output temperature