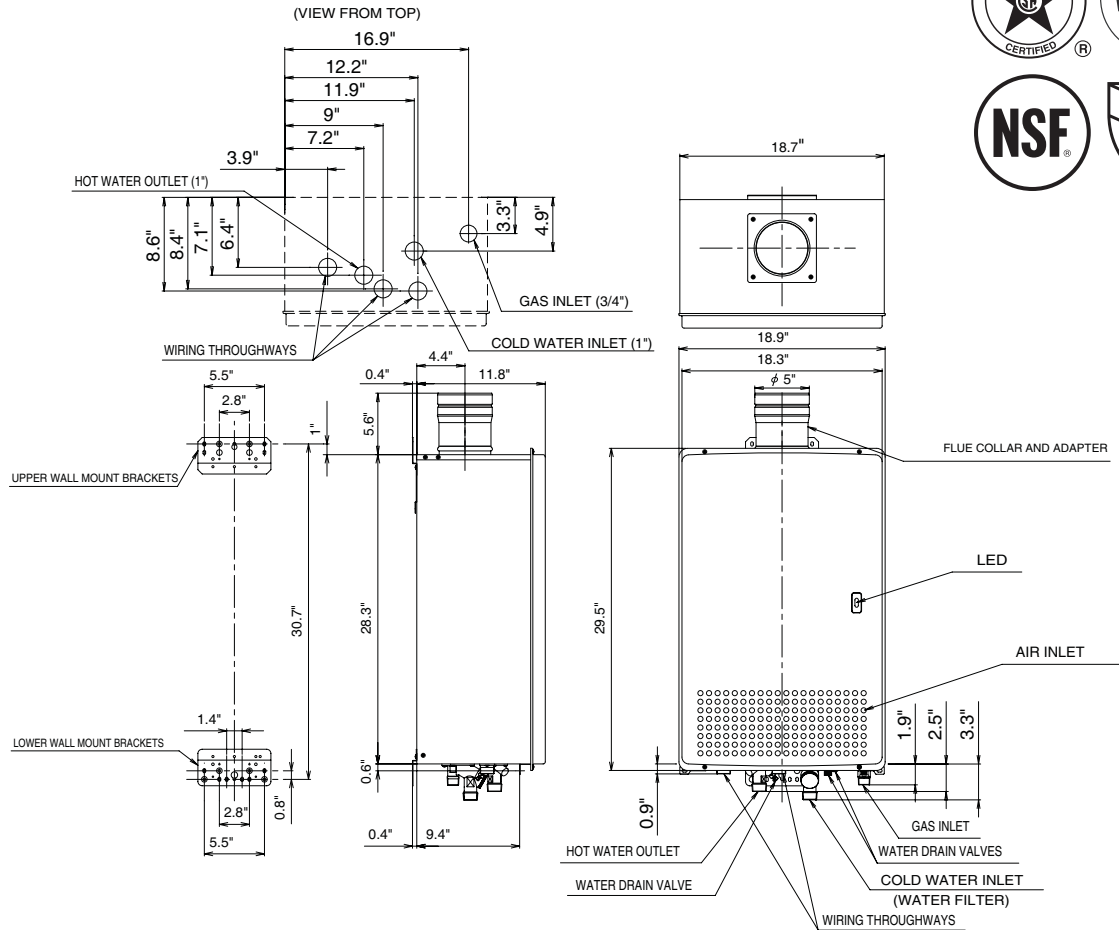


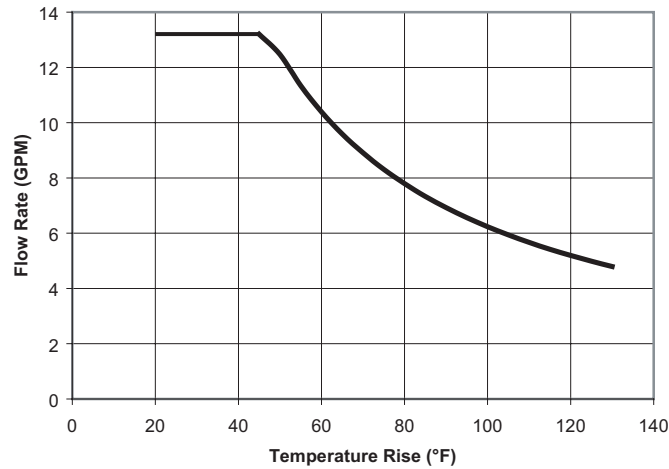
# Model N-132M Tankless Water Heater



Item		Specification
Model Name		N-132M
Type	Installation	Indoor/Outdoor, Wall Hanging
	Air-supply/Exhaust	Power Vented
Ignition		Direct Ignition
Operating Water Pressure		15 - 150 PSI
Minimum Flow Rate		0.7 GPM
Gas Supply Pressure		NG : 5.0" - 10.5"    LP : 10.5" - 14.0"
Dimensions		29.5"(Height) x 18.9"(Width) x 11.8"(Depth)
Weight		105(pounds)
Water Holding Capacity		0.6 Gallon
Connection Sizes	Water Inlet	1"
	Hot Water Outlet	1"
	Gas Inlet	3/4"
Power	Supply	120VAC(60Hz)
	Consumption	NG: 137W    LP: 142W    Freeze Prevention 371W
Material	Casing	Zincified Steel Plate / Acryl Coating
	Flue Collar	Stainless Steel
	Heat Exchanger	Copper Sheetting, Copper Tubing
Safety Devices		Flame Rod, Thermal Fuse, Pressure Relief Valve, Wind Pressure Switch, Lightning Protection Device (ZNR), Electric Leakage Prevention Device(GFCI), Overheat Prevention Device, Freezing Prevention Device, Fan Rotation Detector
Included Accessories		Remote Cotroller, Remote Controller Cord, Exhaust Adapter, Anchoring Screws
Optional Accessories		Isolator EXP (#IK-WV-3), Outdoor Vent Cap (#VC-132), Pipe Cover (#PC-132M), Remote Controller Outdoor Junction Box (#RC-OJB), ScaleShield (#SS-HB-2 (2 units)), Quick-Connect Cable (#QC-1M), Multi-System Controller (SC-201-6M)

# Model N-132M Product Performance

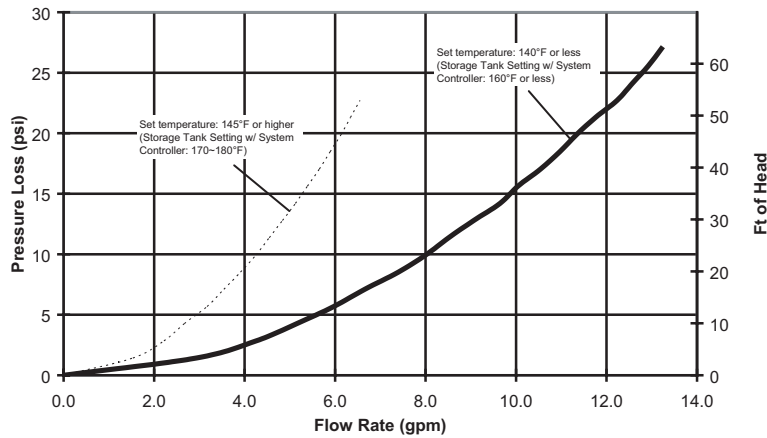
## Flow Rates



Temperature Rise (°F)	20	30	40	45	50	60	70	80	90	100	110	120	130
Flow Rate (GPM)	13.2	13.2	13.2	13.2	12.5	10.4	8.9	7.8	6.9	6.2	5.7	5.2	4.8

\*For peak flow rates in shaded areas, contact Noritz for proper setting.

## Pressure Loss



Item		Maximum Performance	Minimum Performance
Gas Consumption	NG	380,000 btuh	22,500 btuh
	LP	380,000 btuh	22,500 btuh
Hot Water Capacity	35°F Rise	13.2 Gal/min.	
	45°F Rise	13.2 Gal/min.	
	77°F Rise	8.1 Gal/min.	
	100°F Rise	6.2 Gal/min.	
Capacity Range		0.7 - 13.2 Gal/min.	
Temperature Settings		100-150°F (In 5°F intervals) ,160, 170, 180°F (14 Options)	
Default Temperature Options		120, 130, 140, 180°F (Default is 120°F)	
Features		Quick-Connect (2 units), Multi-System (Up to 24 units), Pump Control	
Warranty		10/3- Residential, 3/3- Commercial or Circulation Use	
Approvals		CSA, UPC, NSF	

Noritz America reserves the right to discontinue, or change at any time, the designs and/or specifications of its products without notice.