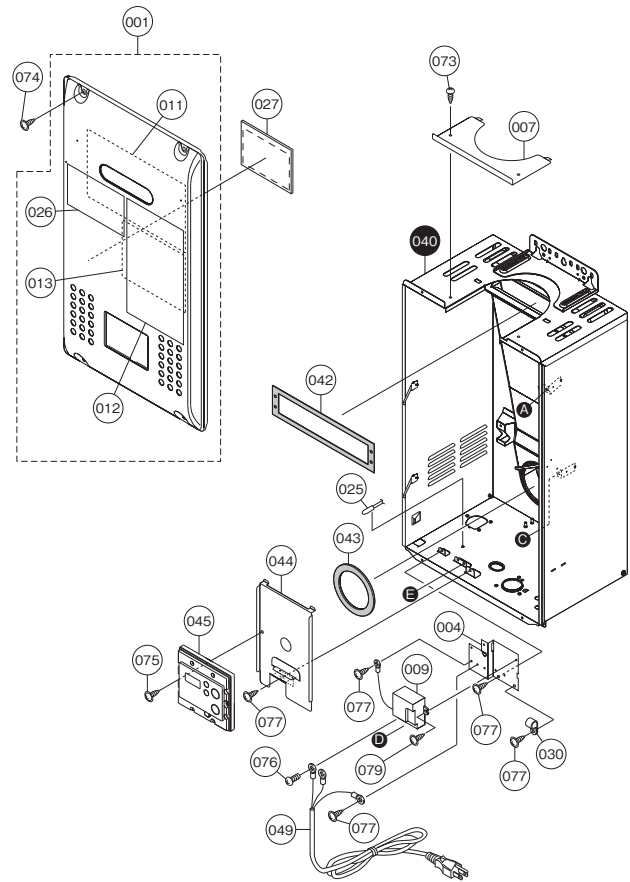


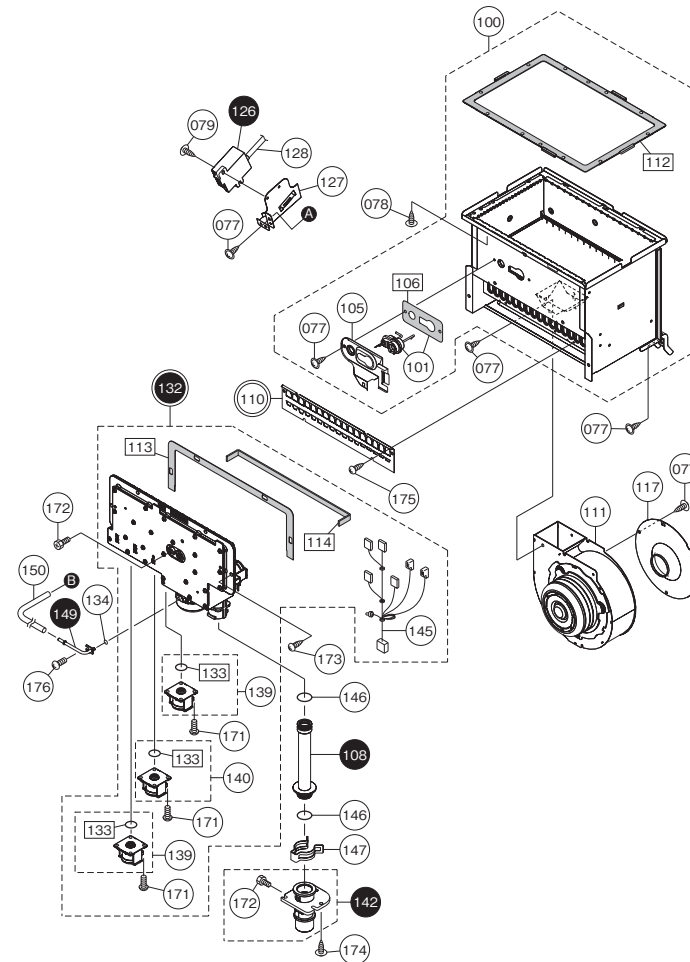
External outfitting NR83DVC (GQ-2457WS-FFA US)



External outfitting NR83DVC (GQ-2457WS-FFA US)

Part Nos.	Part Names	Order Nos.	Q'ty/unit
001	Front Cover - NR83DVC (GQ-2457WS-FFA US)	SKJ71J5	1
004	Mounting Plate - Terminal Block and/or GFCI	DZTA006	1
007	Cover - Top of Case	ERDA006	1
009	Lightning Protection	ERD011	1
011	Wiring Diagram	EYXK002	1
012	Label - Outside Front Cover Caution Label	ELVK003	1
013	Label - Inside Front Cover Caution Label	ELVK006	1
025	Thermistor - Air	BWCH003	1
026	Label - Name Plate	ELVK010	1
027	Parts List/Technical sheet	EYXK031	1
030	Wire Clamp - Nylon	7287609	1
040	Case - NR83DVC (GQ-2457WS-FFA US)	ERDA001	1
042	Gasket - Duct Intake	ERDL003	1
043	Gasket - Fan Intake	ERDL001	1
044	Mounting Plate - Remote Controller	ELVA100	1
045	Remote Controller - RC-7651M Body (SET)	DXUJ015	1
049	Power Supply Cord	ERD013	1
073	Screw - Medium Tapping M4X12 S410		
074	Screw - Front Cover with washer M4X12 S410		
075	Screw - Extra Long Tapping M4X20		
076	Screw - GFCI M3.5X10 S430		
077	Screw - Short Tapping M4XB S410		
078	Screw - Medium Tapping M4X10 S410		
079	Screw - Long Tapping M4X12 S410		

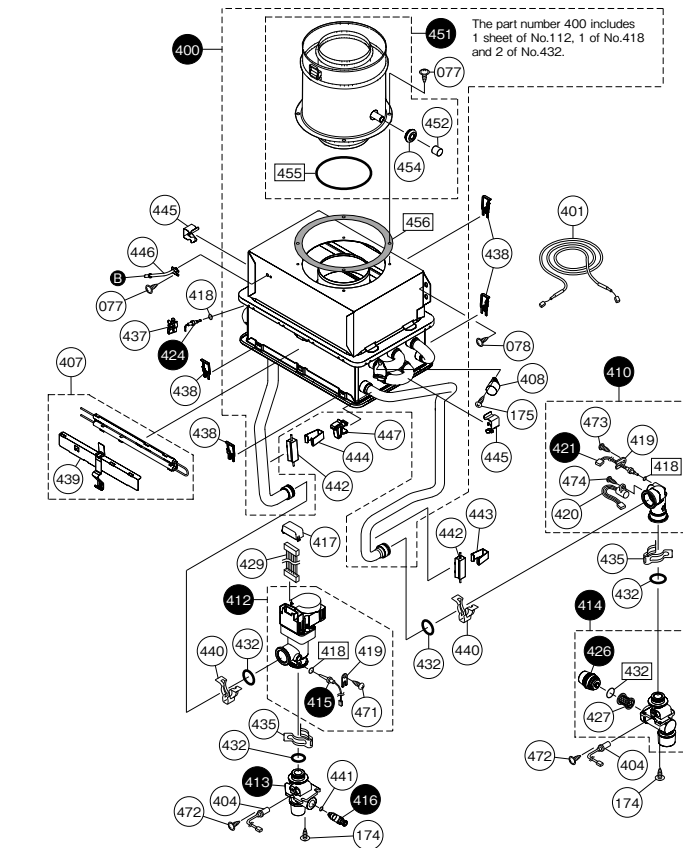
Combustion unit and gas route NR83DVC (GQ-2457WS-FFA US)



Combustion unit and gas route NR83DVC (GQ-2457WS-FFA US)

Part Nos.	Part Names	Order Nos.	Q'ty/unit
100	Burner w/ Gasket and Ignition Plug (SET)	SKG7314	1
101	Ignition Plug w/ Gasket	SKG7311	1
105	Mounting Plate - Ignition Plug	EGLC014	1
106	Gasket - Ignition Plug	EHKL001	1
108	Gas Pipe	ERDE021	1
110	Burner Damper 17-11	EFWC031	1<LP>
111	Fan Motor w/ Housing	EFWC032	1<NG>
112	Gasket - Burner	SKG7342	1
113	Gasket - Manifold Plate Top	ERDL007	1
114	Gasket - Manifold Plate Bottom	ERDL009	1
117	Fan Plate	ERDC006	1
126	Igniter	ERD1112	1
127	Mounting Plate - Igniter	DTJA015	1
128	High Voltage Igniter Wire	SAC1229	1
132	Gas Valve w/ Manifold Plate 14 (SET)	SKG7339	1<LP>
133	Gas Valve w/ Manifold Plate 22 (SET)	SKG7340	1<NG>
134	O-Ring - Gas Solenoid	SAAG044	3
139	O-Ring - Back Pressure Tube P4	2100908	1
140	Gas Manifold Solenoid 1	SKG7315	2
140	Gas Manifold Solenoid 2	SKG7316	1
141	Inlet Gas Connection w/ Screw (SET)	ELVE021	1
145	Wiring Harness - Gas Valve	ERD0315	1
146	O-Ring - Gas P18	2110903	2
147	"C" Clamp - Gas Pipe 16B	6340407	1
149	Tube - Metal Back Pressure Tube	EHK4046	1
150	Tube - Silicone	ELVL018	1
171	Screw - Machine w/ guide M4X12		
172	Screw - Inlet and Manifold Gas M4XB	SAC6082	2
173	Screw - Large Manifold Plate M5X16 S410		
174	Screw - Long Machine M4X12 S410		
175	Screw - Small Tapping w/o collar M4XB S410		
176	Screw - Small Tapping M4XB		

Hot-water feed route NR83DVC (GQ-2457WS-FFA US)

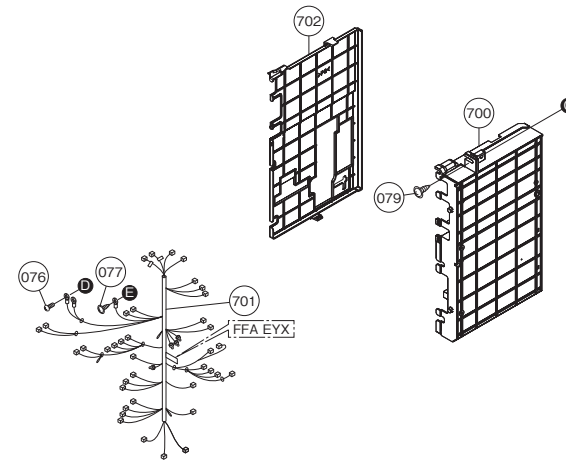


Hot-water feed route NR83DVC (GQ-2457WS-FFA US)

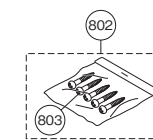
Part Nos.	Part Names	Order Nos.	Q'ty/unit
400	Heat Exchanger Kit (DVC) (SET)	SKJ71J8	1
401	Thermal Fuse	SKG7347	1
404	Freeze Prevention Heater - Round Short	ERDH003	2
407	Freeze Prevention Heater - Double Round (SET)	SKG7317	1
408	High Limit Switch	ELVH002	1
410	Water Flow Sensor (SET)	ERD0011	1
412	Water Servo -Main (SET)	JDWD001	1
413	Outlet Water Connection	EHUD004	1
414	Inlet Water Connection (SET)	EHVD001	1
415	Thermistor - Hot Water	BWCD098	1
416	Drain Cock	CRUD003	1
417	Wire Cover - Servo	EBTD023	1
418	O-Ring - Thermistor High Temp P4	1323709	3
419	Thermistor Holding Plate	ALSD088	2
420	Magnetic Sensor - Flow Sensor	BWCD090	1
421	Thermistor - Cold Water	BWCD097	1
424	Thermistor - Heat Exchanger	BWCD098	1
426	Water Filter Cap	DTJD006	1
427	Water Filter	EGBD032	1
429	Wiring Harness - Main Water Servo	JBGJ024	1
432	O-Ring - High Temp P16	3223502	5
435	"C" Clamp - Water Pipe 16A	6340300	2
437	"C" Clamp - Thermistor	CRUD055	1
438	Clamp - Thermal Fuse	EGLH002	4
439	Clamp - Freeze Prevention	ERDH011	1
440	"C" Clamp - Water Pipe 16-25	SAD6593	2
441	O-Ring - High Temp P3	SAD6633	1
442	Freeze Prevention Heater - Rectangle	ERDH002	2
443	Clamp - Rectangle Heater	AJBL002	1
444	Clamp - Freeze Prevention	AMML001	1
445	Clamp - Thermal Fuse	CMNH003	2
446	Tube - Metal Back Pressure Tube	EHK4046	1
447	Clamp - Harness	SAS2774	1
451	Concentric Flue Pipe (SET)	EYTF090	1
452	Cover - Flue Condensate Drain	ELVF097	1
454	Gasket - Flue Condensate Drain	ELVF096	1
455	O-Ring - Concentric Flue Pipe P80	ELVF098	1
456	Gasket - Flue to Exhaust Box	ELVL019	1
471	Screw - Round Head Medium Tapping M4X10 S410		
472	Screw - Short Machined M4X6 S410		
473	Screw - Small Tapping M4X14 S305		
474	Screw - Small Tapping M4X10 S305		

Electronic control unit and Attached set NR83DVC (GQ-2457WS-FFA US)

Electronic control unit



Attached set



<Special part>

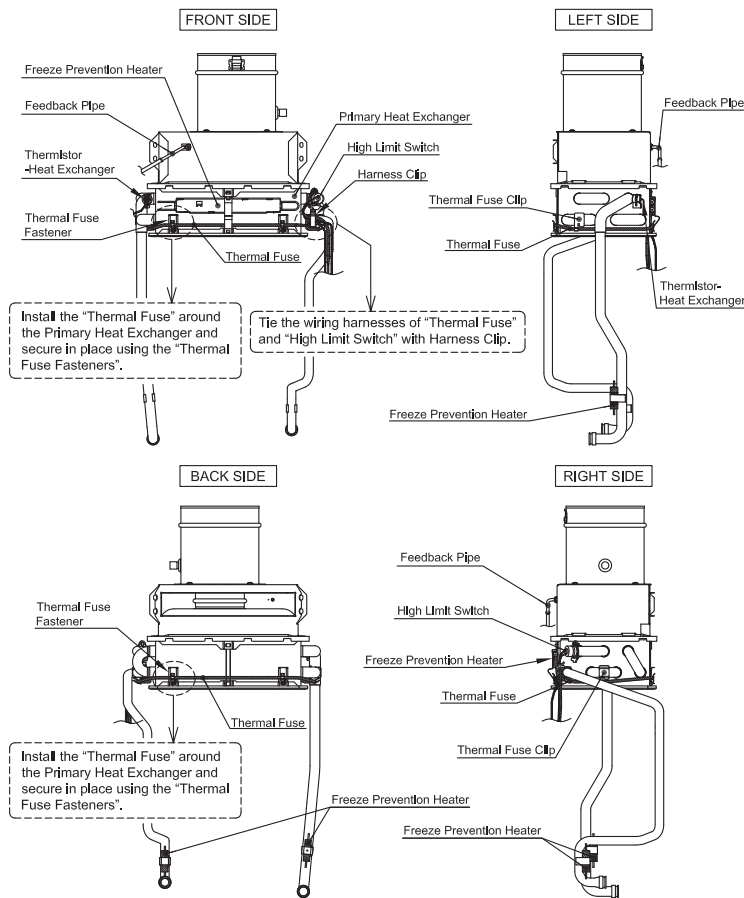
Special part	Special part no.
Owner's guide	888
Installation manual	889

Electronic control unit and Attached set NR83DVC (GQ-2457WS-FFA US)

Part Nos.	Part Names	Order Nos.	Q'ty/unit
700	Circuit Board	SHCT0V3	1
701	Wiring Harness - NR83DVC(GQ-2457WS-FFA US)	EYXJ021	1
702	Cover - Circuit Board	ERD0008	1
800	Box	SKG7318	1
802	Wood Screw set5	SAF6007	1
803	Screw - Round Head Wood 4.8X38 S305		
888	Owner's Guide	SBB80JV	1
889	Installation Manual	SBB80JV	1

«Thermal Fuse Replacement Procedure»

Move the "Freeze Prevention Heaters", "High Limit Switch", "Thermistor-Heat Exchanger", "Feedback Pipe", "Thermal Fuse Fasteners", "Harness Clip", and "Thermal Fuse Clip" from the old Primary Heat Exchanger to the new one.
(See 4 side view pictures below for location of each part.)



Procedure for Flushing the Heat Exchanger

This procedure is only intended for use by a qualified service professional or authorized Noritz Service Representative. Any unauthorized use of this procedure may result in voiding the warranty. Please contact Noritz America (866-766-7489) for additional support.

If the error code "C*#"-C*#" is flashing on the Remote Controller (or Operation Panel**), it means there is Scale Build-up in the Heat Exchanger. The Heat Exchanger needs to be flushed*** to remove the Scale Build-up.

Damage to the water heater due to Scale Build-up is not covered by the water heater's warranty. To clear the error code "C*#"-C*#", the Heat Exchanger must be flushed.

If the error code "C*#" is displayed and flashing on the Remote Controller (or Operation Panel**), please contact Noritz America (866-766-7489).

** * = 1, 2, 3, 4, F / # = 0, 1, 2, 3, 4, 5, 6, 7, 8, 9
** NR98DVC(GQ-2857WX-FFA US) and NR83DVC(GQ-2457WS-FFA US) only.

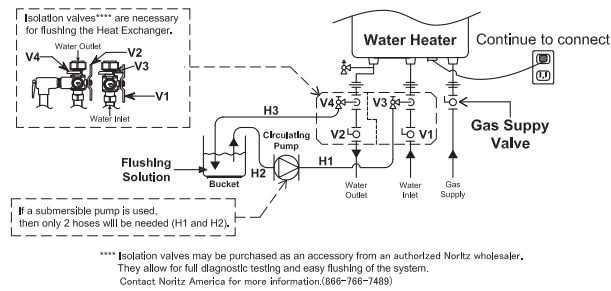
*** Connect the "blue connector for flushing" near the Circuit Board when flushing the Heat Exchanger. After connecting it, the water heater is set to "Flushing Mode".

The water heater must remain connected to electrical power when flushing the Heat Exchanger.

Basic Procedure

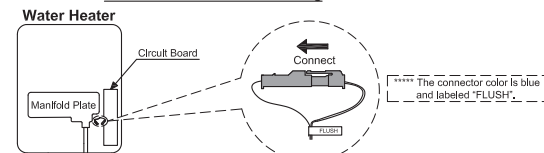
«Procedure 1. The preparation of the flushing system»

1. Close the gas supply valve.
2. Close the water inlet valve (V1) and the water outlet valve (V2).
3. Connect the one drain hose (H1) to the drain valve (V3), and then the other to the circulating pump.
4. Connect the drain hose (H2) to the circulating pump.
5. Connect the drain hose (H3) to the drain valve (V4).
6. Pour 1 gallon of "Calcium, Lime and Rust Removal Product" and 1 gallon water into the bucket. Noritz recommends "Calcium, Lime and Rust Removal Product" for flushing.
7. Place the both drain hoses (H2 and H3) into the bucket filled with the flushing solution.
8. Open the both drain valves (V3 and V4).



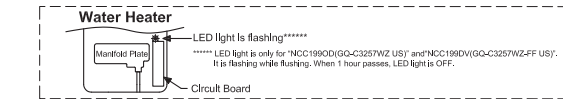
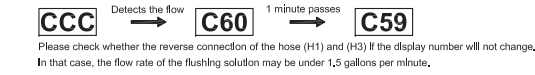
«Procedure 2. Flushing the Heat Exchanger»

1. Open the Front Cover.
2. Connect the "blue connector****" for flushing" near the Circuit Board.



3. Then the code "CCC" is displayed on the Remote Controller. **CCC**
4. Turn on the circulating pump to circulate the flushing solution through the water heater for 1 hour at a rate of 1.5 gallons per minute or more.
5. The code "C60" is displayed on the Remote Controller when the water heater detects the flow of the flushing solution.

When 1 minute passes, the code "C60" will change to "C59" on the Remote Controller.

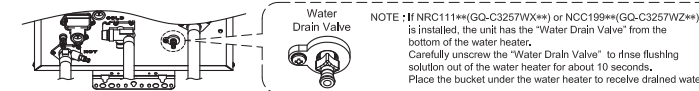


6. When 1 hour passes, the code "C00" is flashing on the Remote Controller. **C00** - Flashing
- Do not disconnect the "blue connector for flushing".
7. Turn off the circulating pump.

«Procedure 3. Cleaning the Heat Exchanger»

The flushing solution needs to be rinsed and cleaned out of the water heater. Below is the way to rinse and clean the flushing solution.

1. Remove both drain hoses (H2 and H3) from the bucket. And then place the drain hose (H3) into the sink or outside to drain.
2. Close the drain valve (V3) and then open the water inlet valve (V1). Do not open the fresh water outlet valve (V2).
3. Clean the water heater with fresh water for 3 minutes or more. (Needs to have enough time to clean the water heater.)

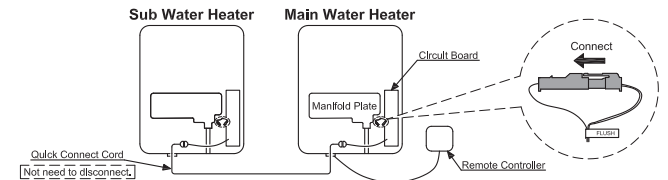


4. Close the drain valve (V4) and then remove the drain hose (H3) from the drain valve (V4).
5. Remove the drain hose (H1) from the drain valve (V3).
6. Disconnect the "blue connector for flushing" near the Circuit Board. The code "C00" goes out on the Remote Controller.
7. Close the Front Cover.
8. Open the gas supply valve and water outlet valve (V2).
9. Check for correct operation of the water heater.



In case of the "Quick Connect Multi System Procedure"

1. Connect the "blue connector for flushing" of need to be flushed. (The water heater is isolated from Quick Connect Multi system when the "blue connector for flushing" is connected. Not need to disconnect the Quick Connect Cord.)



2. Then the code "CCC" or "FCC" is displayed on the Remote Controller.

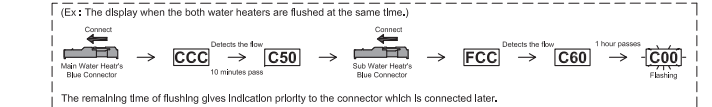
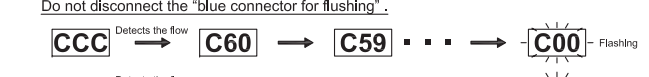
CCC is displayed when the Main Water Heater's blue connector is connected.

FCC is displayed when the Sub Water Heater's blue connector is connected.

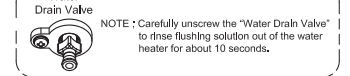
2. Turn on the circulating pump to circulate the flushing solution through the water heater for 1 hour at a rate of 1.5 gallons per minute or more. (LED light is flashing while flushing the heat exchanger. See the "Procedure 2.5".)

3. When 1 hour passes, the code "C00" is flashing on the Remote Controller.

Do not disconnect the "blue connector for flushing".



4. Turn off the circulation pump.
5. Rinse and clean the flushing solution out of the water heater in accordance with "Procedure 3". (See the "Procedure 3.1-3.5".)



6. Disconnect the "blue connector for flushing". The Code "C00" goes out on the Remote Controller.
7. Close the Front Cover.
8. Open the gas supply valve and water outlet valve.
9. Check for correct operation of the water heater.

See the Installation Manual in case of the "Multi System's Flushing Procedure".

Please contact Noritz America if more information is needed for flushing.
(Phone #: 866-766-7489)