


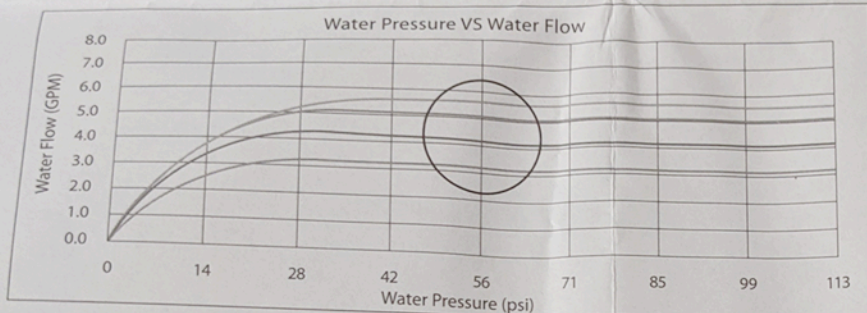
# Installation Manual

## 1. Included Accessories

Check for any missing items before starting installation

No.	Part	Description	Q'ty
1	water pressure reducing valve		3
2	Installation manual		1

## 2. Characteristic curve of the pressure reducing valve



Orange Color [CH-240]  
 Yellow Color [CH-210]  
 Blue Color [CH-180]  
 Pink Color

### Installation Example

All CH models are shipped from the factory with a package of 3 flow regulators for use with various flow rates. Each included reducing valve (flow regulator) allows for a specific amount of water flow through the unit and is installed at the DHW cold water inlet adapter (the flow rate capacities were determined when tested with 56 psi water pressure from the factory).

The ORANGE piece comes pre-installed on the CH-240 model and allows up to 5.6 GPM of flow.

The YELLOW piece comes pre-installed with the CH-210 model and allows up to 5.0 GPM.

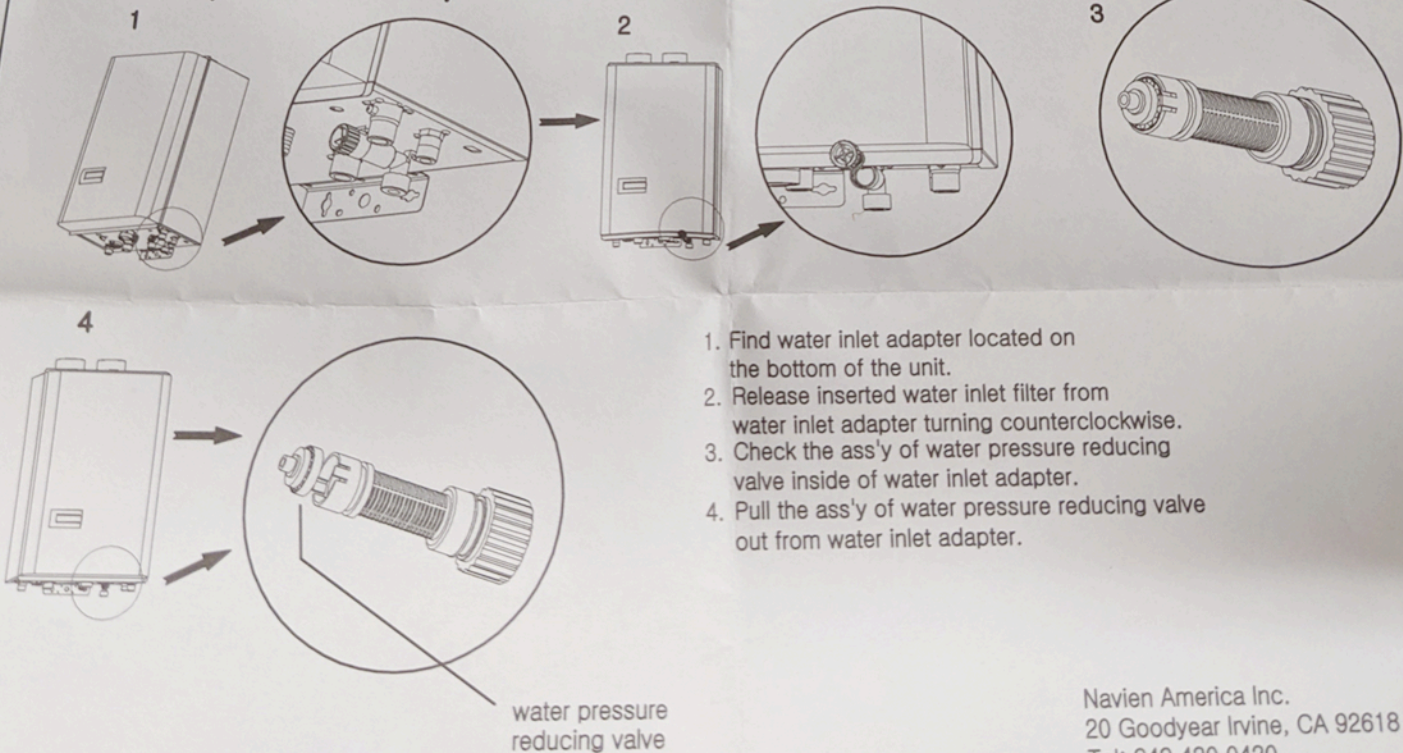
The BLUE piece comes pre-installed with the CH-180 model and allows up to 4.0 GPM. The PINK piece allows up to 3.2 GPM.

### Precaution

Please do not deliberately remove the pressure reducing valve installed in the body of DHW Cold Water Inlet Adapter.

Please refer to the graph and change the Water Pressure Reducing valve for proper operation.

## 3. Replace the pressure reducing valve



1. Find water inlet adapter located on the bottom of the unit.
2. Release inserted water inlet filter from water inlet adapter turning counterclockwise.
3. Check the ass'y of water pressure reducing valve inside of water inlet adapter.
4. Pull the ass'y of water pressure reducing valve out from water inlet adapter.

water pressure reducing valve

Navien America Inc.  
 20 Goodyear Irvine, CA 92618  
 Tel: 949 420 0420  
[www.navienamerica.com](http://www.navienamerica.com)