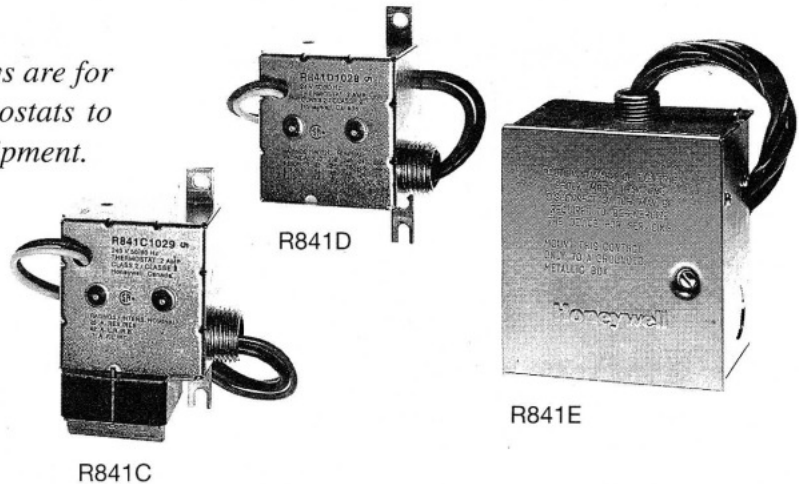


R841C, D, E, F and G Electric Heating Relays

The R841 Electric Heating Relays are for use with two wire, low voltage thermostats to provide control of electric heating equipment.



- Quiet, reliable operation
- Suitable for controlling all 24Vac 2 wire heating only thermostats
- Versatile mounting.
- R841C models include the enclosure and an integral transformer.
- R841D models have an enclosure but are without transformer.
- R841E models contain two switches, have an enclosure and an integral transformer
- R841F models are without enclosure, with integral transformer.
- R841G models are without enclosure and transformer.
- Conduit bushing for easy mounting (on C and D models).
- Compact size allows mounting in difficult to access locations.
- Rated for baseboard loads up to 6 kW.
- C.S.A. and U.L. approved.

CONTENTS

Specifications	2
Installation	2
Wiring Diagrams	3

Models

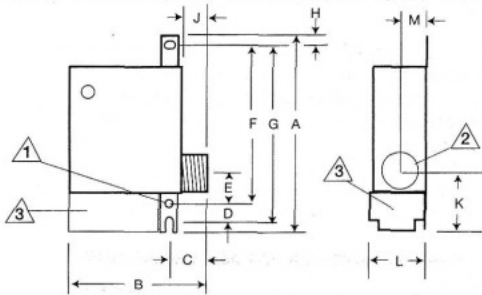
R841 Family	Integral Transformer	Enclosure with conduit bushing	120/240/277 Vac 50/60 Hz	24 Vac 50/60 Hz	Dual Load
R841C	•	•	•		
R841D		•		•	
R841E	•	•	•		•
R841F	•		•		
R841G				•	

Operating Range: -30 to 65°C (-20 to 150°F)
 CSA Certified, U.L Listed, File No. E47434 Guide XAPX.

Device Ratings (Models C, D, E, F, G)

Volts (50-60 Hz)	120	208	240	277	347	600
Resistive	22	22	22	19	18	10
Full Load Amps	14	8	7	5	5	3
Locked Rotor Amps	84	42	42	36	29	17

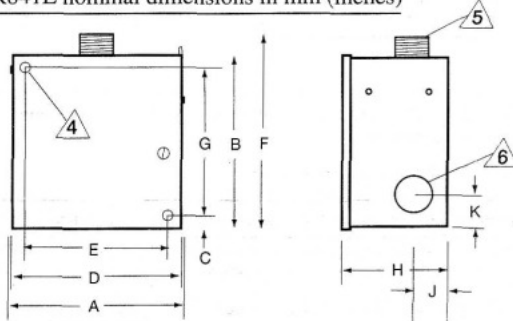
Figure 1 - R841C,D nominal dimensions in millimeters. (inches)



- 1 Mounting holes (2) and slot for #8 screw.
- 2 Male conduit bushing for 12.2 mm (1/2 inch) knockout.
- 3 Transformer not applicable to R841 D and G models.

Key	A	B	C	D	E	F	G	H	J	K	L	M
mm (nom.)	95	65	20	10	20	75	85	5	10	35	40	15
inches	3 1/4	2 3/8	3/4	15/32	3/4	2 29/32	3 3/8	1/4	7/16	1 15/32	1 1/2	5/8

Fig. 2 R841E nominal dimensions in mm (inches)



- 4 Two mounting holes for #8 screws.
- 5 Male conduit bushing for 12.2 mm (1/2 inch) knockout.
- 6 22.2 mm (7/8 inch) knockout dimensions.

Key	A	B	C	D	E	F	G	H	J	K
mm (nom.)	100	105	10	98	80	120	85	65	20	20
inches	3 15/16	4 1/8	3/8	3 7/8	3 1/8	4 13/16	3 3/8	2 1/2	7/8	13/16

Operation:

On a call for heat, the thermostat energises the low voltage resistance heater in the R841, which drives an ambient compensated bimetal to operate a SPST MicroSwitch™ snap switch. From a cold start (and with 24Vac applied and within the ambient temperature range), the R841 switch contacts make between 40-80 seconds after a call for heat.

Installation and Wiring:

WHEN INSTALLING THIS PRODUCT:

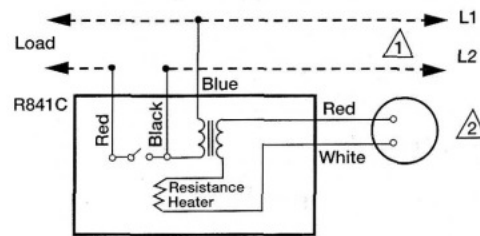
1. Read these instructions carefully. Failure to follow the instructions provided could damage the product or cause a hazardous condition.
2. Check the ratings given in the instructions and on the product to make sure the product is suitable for your application.
3. Installer must be a trained, experienced service technician.
4. After installation is complete, check out product operation as provided in these instructions.

Run wiring to mounted relay and connect according to system selected. **IMPORTANT: All wiring must agree with applicable codes in such matters as wire size, insulation, and enclosure.**

CAUTION

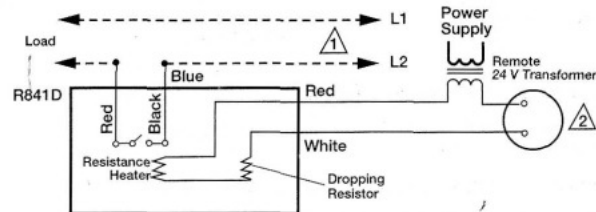
1. Disconnect power supply before installing to prevent electrical shock hazard.
2. Installer must be a trained, experienced service technician.
3. All wiring must comply with national and local electrical codes, ordinances, and regulations.
4. Provide disconnect means and overload protection as required.
5. Do not install where excessive humidity combined with temperature change can result in water condensation on the unit.
6. Do not surround the R841 with insulation which could elevate the internal temperature above 65°C (150°F).

Fig. 3 R841C, F internal schematic and wiring diagram.



- 1 Add disconnect means and overload protection as required.
- 2 Low voltage 2-wire thermostat.

Fig. 4 R841D and G internal schematics and connection diagram.



- 1 Add disconnect means and overload protection as required.
- 2 Low voltage 2-wire thermostat.