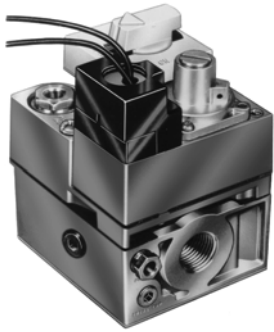


# Combination Gas Controls

## V400 Line Voltage; V800 Low Voltage Combination Gas Controls



V400



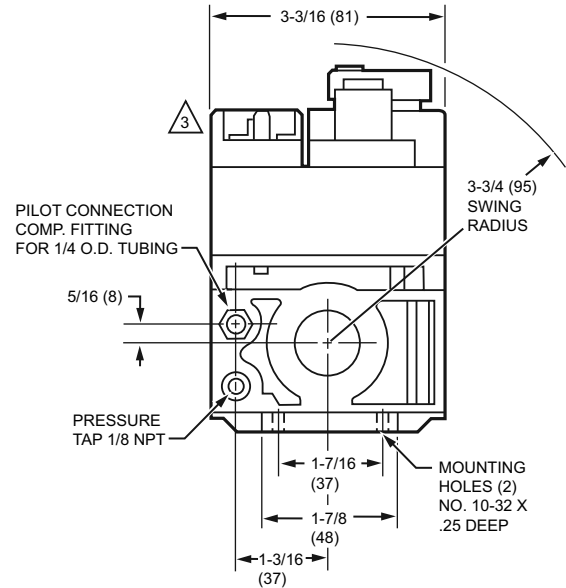
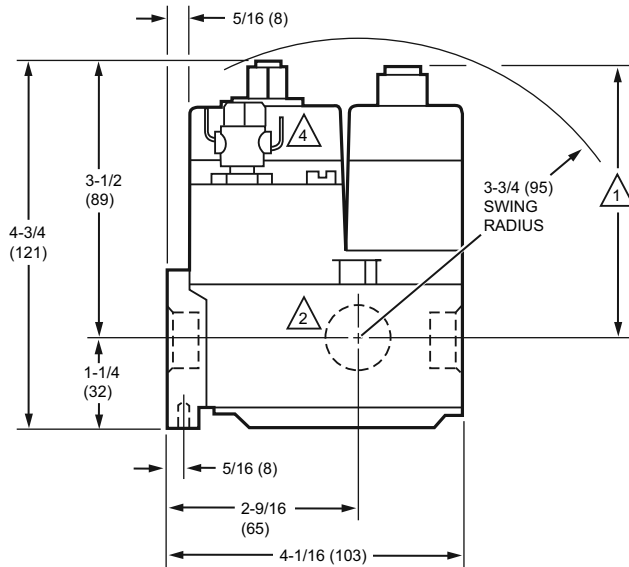
V800

Used on gas fired standing pilot appliances with 30 mV thermocouple. These gas controls include a manual gas valve, safety shutoff, single millivoltage automatic operator, and pressure regulator, pilot gas filter and flow adjustment, pressure tapping, and thermocouple connector. V800 is used on 24V systems.

- Include pilot flow adjustment screw.
- Easy to install, adjust and service; all adjustments and connections are accessible from top of control.
- Add separate energy cutoff (ECO) where codes call for dual safety shutoff.
- Complete safety shutoff on pilot flame failure.
- LITE-RITE (OFF-PILOT-ON) lighting sequence.
- ECO connector for V800 models. Part No. 392451-1.

Residential  
Combustion Controls

### Dimensions in inches (millimeters)



1 WITH V5306 (ILLUSTRATED), V5307 OR 5390 PRESSURE REGULATOR: 24V MODELS—3-1/2 (89), 120V MODEL—3-5/8 (92)  
MANUAL MODELS—2-13/16 (71), FOR V5308 ADD 5/8 (16) TO DIMENSIONS GIVEN.

2 SIDE OUTLETS—LEFT AND RIGHT HAND. STANDARD ONLY ON TRADELINE MODELS.

3 CONTROL WITH 24V VALVE OPERATOR SHOWN. LINE VOLT MODEL HAS COVER FOR CONDUIT CONNECTION (TOP SURFACE).

M16547A

4 ECO CONNECTOR ON STANDARD CAPACITY V800 ONLY.

**Type:** Single Stage

**Dimensions, Approximate:** 4 3/4 in high x 4 1/16 in. wide x 3 3/16 in. deep (121 mm high x 103 mm wide x 81 mm deep)

**Body Pattern:** Straight-through, multi-tapped with 1/2 in. right and left outlets plugged

**Capacity @ 1 in. p.d.** 335,000 BTU/hr; 295,000 BTU/hr minimum

**Ignition Type:** Standing Pilot

**Pressure Ratings:** 1/2 psi (3.5 kPa)

**Pressure Tapping:** 1/8 in. NPT with plug

**Pilot Gas Outlet:** Compression fitting for 1/4 in. OD tubing

**Mounting:** 0 to 90 degrees in any direction from the upright position of the gas control knob, including vertically.

**Approvals:**

**American Gas Association:** AGA Design Certified; File No. L2025003, CGA Design Certified; File No. L2025003, UL Component Recognized.

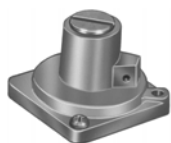
**Underwriters Laboratories Inc.** UL Component Recognized.

# Combination Gas Controls

	Product Number	Type of Gas	Opening Characteristics (standard, step)	Inlet/Outlet Size (in.)	Electrical Ratings	Frequency	Pressure Regulator Setting		Ambient Temperature Range		Includes
							(psi)	(kPa)	(F)	(C)	
•	V400A1095	Natural	Standard	3/4 in. x 3/4 in.	120 Vac	60 Hz	3.5 in. wc	0.87 kPa	32 F to 175 F	0 C to 79 C	Two 3/4 x 1/2 in.; One 1/2 x 3/8 in. Reducer Bushings/Adapters
	V400C1036	Natural	Step Opening	3/4 in. x 3/4 in.	120 Vac	60 Hz	Full Rate: 3.5 in. wc; Step Setting: 0.7 in. wc	Full Rate: 0.87 kPa; Step Setting: 0.17 kPa	32 F to 175 F	0 C to 79 C	—
*	V800A1070	Natural or LP	Standard	1/2 in. x 3/4 in.	24 Vac	60 Hz	3.5 in. wc	0.87 kPa	32 F to 175 F	0 C to 79 C	One 1/2 in. x 3/8 in. reducer bushing; One 3/4 in. x 1/2 in. reducer bushing; Q340 Thermocouple; Natural to LP Conversion Kit
*	V800A1088	Natural or LP	Standard	3/4 in. x 3/4 in.	24 Vac	60 Hz	3.5 in. wc	0.87 kPa	32 F to 175 F	0 C to 79 C	One 1/2 in. x 3/8 in. reducer bushing; One 3/4 in. x 1/2 in. reducer bushing; Q340 Thermocouple; Natural to LP Conversion Kit
*	V800A1476	Natural or LP	Standard	1/2 in. x 3/4 in.	24 Vac	60 Hz	3.5 in. wc	0.87 kPa	32 F to 175 F	0 C to 79 C	Natural to LP Conversion Kit
*	V800A1591	Natural or LP	Standard	3/4 in. x 3/4 in.	24 Vac	60 Hz	3.5 in. wc	0.87 kPa	32 F to 175 F	0 C to 79 C	Natural to LP Conversion Kit; Two 3/4 x 1/2 in. reducer bushings
*	V800C1052	Natural or LP	Step Opening	3/4 in. x 3/4 in.	24 Vac	60 Hz	Full Rate: 3.5 in. wc; Step Setting: 0.9 in. wc	Full Rate: 0.87 kPa; Step Setting: 0.22 kPa	32 F to 175 F	0 C to 79 C	Two 3/4 x 1/2 in.; One 1/2 x 3/8 in. Reducer Bushings/Adapters

\* TRADELINE models • SUPER TRADELINE models

## Pressure Regulators - Standard and Step Opening



Servo gas pressure regulator for add-on or replacement use on Honeywell V400, V800, VR400, VR800 and VR8440 Combination gas controls. Utilizing the servo principle of operation, it controls burner manifold pressure by repositioning the main valve diaphragm.

- Interchangeable and adapt to all pipe sizes and capacities.
- Mount on top surface of control. Installation and adjustment readily accomplished with a screwdriver.

**Mounting:** Top surface of combination gas control (two mounting screws and a gasket).

**Pressure Ratings:** 1/2 psi (3.5 kPa)  
**Temperature Range:** -40 F to +175 F (-40 C to +79 C)

	Product Number	Type of Gas	Opening Characteristics (standard, step)	Pressure Regulator Setting
*	V5306B1009	Natural	Standard Opening	3.5 in. wc; adj. range 3-5 in. wc
	V5306B1033	LP	Standard Opening	11.0 in. wc; adj. range 8-12 in. wc

\* TRADELINE models • SUPER TRADELINE models