

UNINSULATED STANDARD STOCK BARE STORAGE TANKS

A. O. Smith commercial hot water storage tanks are designed for use with gas/electric water heaters and boilers to provide additional hot water storage capacity for systems with large hot water draws. A. O. Smith glasslined storage tanks are designed and recommended for systems with operating temperatures up to 180°F.

PERMAGLAS® GLASSLINING

- All internal surfaces exposed to water are glasslined per ASME HLW procedures, using an NSF-approved glasslining compound
- Glass is highly resistant to effects of temperature, corrosion and electrolysis

SIZES FROM 80 TO 1,000 GALLONS IN STOCK

- All tanks in table on reverse side are normally carried in stock for immediate shipment, providing a fast solution for retrofit requirements

HORIZONTAL OR VERTICAL MOUNTING

- A. O. Smith standard stock tanks (except the T-80S, T-120S and TL-500A) are shipped factory standard with leg sockets for vertical installation, but are also designed to have the proper inlet/outlet openings that allow horizontal installation
- For horizontal installations, optional tank saddles are required (TL-500A is horizontal only)

T-325 ASME RETROFIT SPECIAL

- The T-325 ASME (34 x 84) is designed to provide maximum storage capacity and fit through a 36" door

MAGNESIUM ANODES

- For extra protection against corrosion

WORKING PRESSURES

- Tanks tested at pressures assigned in accordance with working pressures shown in table on reverse side

CUSTOM TANKS

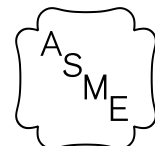
- In order to offer storage tanks for immediate shipping, the A. O. Smith Standard Stock Tanks are offered with only those openings and features shown in the following tables
- A. O. Smith also offers a full line of custom tanks from 80 to 12,500 gallons built to meet your specifications and are available with many options such as various working pressures, lifting lugs, handholes, manholes, special linings, special openings, factory jacket/installation, and built to military specifications
- For custom tanks, please see the A. O. Smith Custom-Line HD storage tank spec sheet

MODELS

**T-80
THROUGH
T-1000**



ASME



HLW
(OPTIONAL)

CRN



Low Lead Content

OPTIONS

- ASME and National Board Certification sheets - furnished upon request
- Tanks saddles - two per horizontal tank required

FIVE-YEAR LIMITED TANK WARRANTY

- For complete information, consult written warranty or contact A. O. Smith

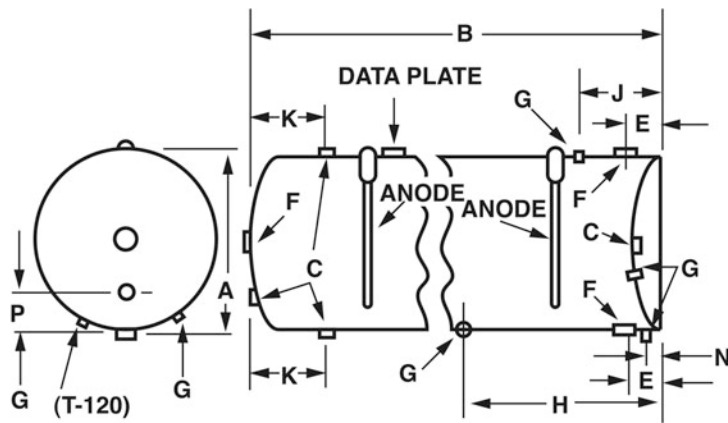


FIGURE 1 - T-80, T-120
NOTE: T-120 SHOWN.

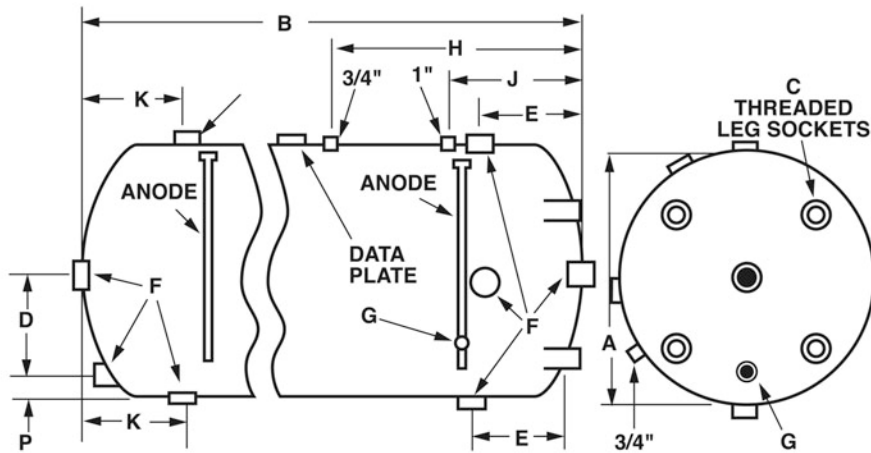


FIGURE 2 - T-140 THRU T-1000A
TL-500 - HORIZONTAL MOUNTING ONLY.
NO LEG SOCKETS.

DIMENSION AND SHIPPING WEIGHTS

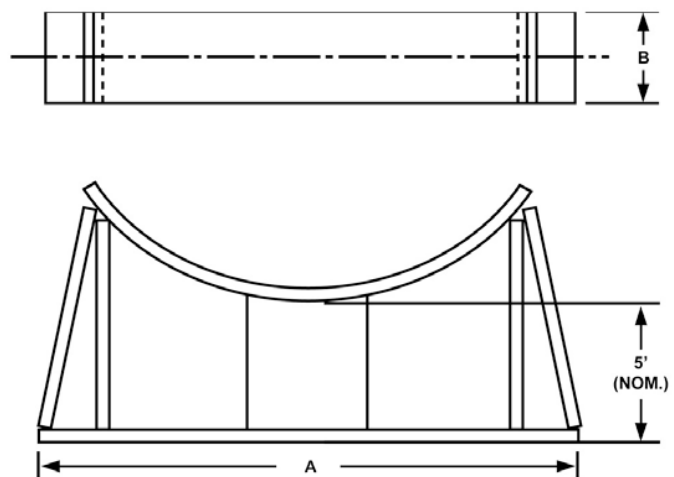
MODEL NUMBER	GALLON CAPACITY	OVERALL DIMENSIONS INCHES	A	B	C	D	E	F	G	H	J	K	N	P	APPROX. SHIPPING WEIGHT
T-80 STD	80	20 x 62-1/8	20	61-1/2	2	–	7	2	3/4	46-1/4	16	3-1/2	3-1/4	4	170
T-120 STD	119	24-1/4 x 65	24-1/4	64-3/8	2	–	7	2	3/4	34-1/2	15-1/2	10-1/2	3-1/2	4-1/8	287
T-200 STD	200	30 x 72	30	70-3/4	2-1/2	10	13	2-1/2	3/4	28-1/2	19-1/2	13	–	4	460
T-350 STD	350	36 x 88	36	86	2-1/2	14	16	2-1/2	3/4	31-1/2	20-1/4	16	–	4	670
T-140 ASME	140	24 x 76-1/4	24	75	2-1/2	8	12	2-1/2	3/4	27-1/2	18-1/2	12	–	4	400
T-200 ASME	200	30 x 72	30	70-3/4	2-1/2	10	13	2-1/2	3/4	28-1/2	19-1/2	13	–	4	460
T-250 ASME	250	30 x 84	30	84	2-1/2	10	13-1/4	2-1/2	3/4	28-1/2	19-1/2	13	–	4	505
T-325 ASME	325	34 x 84	34	84	2-1/2	12	13-1/4	2-1/2	3/4	28-3/4	19-3/4	13-3/4	–	5	600
T-350 ASME	350	36 x 88	36	86	2-1/2	14	16	2-1/2	3/4	31-1/2	20-1/4	16	–	4	670
T-400 ASME	400	36 x 97	36	96	2-1/2	14	16	2-1/2	3/4	31-1/2	20-1/4	16	–	4	775
TN-500 ASME	500	42 x 89	42	88	3	16	18	3	3/4	33-1/2	24-1/2	18	–	5	815
T-500 ASME	500	48 x 74	48	72-3/4	3	18	18	3	3/4	32-3/4	26-3/4	19-3/4	–	6	950
T-750 ASME	750	48 x 106	48	105	3	18	19-3/4	3	3/4	32-3/4	26-3/4	19-3/4	–	6	1290
T-1000 ASME	1000	48 x 138	48	136	3	18	19-3/4	3	3/4	32-3/4	26-3/4	19-3/4	–	6	1655

Working pressure for Standard models T-80, T-120 and T-200: 150 psi
 Working pressure for ASME models T-140 and T-200 through T-1000: 125 psi

OPTIONAL TANK SADDLES FOR HORIZONTAL TANK INSTALLATIONS

HORIZONTAL TANK SADDLES

PART NUMBER	TANK DIAMETER	A	B
9500007145	20	22	6
9500007146	24	26	6
9500007147	30	32	6
9500007149	36	38	6
9500007150	42	44	6
9500007152	48	50	6





Commercial Storage Tanks

UNINSULATED STANDARD STOCK BARE STORAGE TANKS

SUGGESTED SPECIFICATION

Glasslined storage tank(s) shall be A. O. SMITH glasslined storage tank(s) or equal. Tank(s) shall be ___" x ___" and have a nominal capacity of _____ gallons. Tank(s) shall have threaded openings as shown on drawings. Exterior of tank(s) shall be thoroughly cleaned and painted. Interior of tank(s) shall be glasslined with an alkaline borosilicate composition which has been fused to the steel base by firing at a temperature of 1500°F. All internal surfaces exposed to water are glasslined per ASME HLW code procedures using an NSF - approved glasslining compound. Cathodic protection shall be provided. The storage tank(s) shall have a working pressure of _____ psi. The storage tank shall have a five-year limited warranty as outlined in the written warranty.